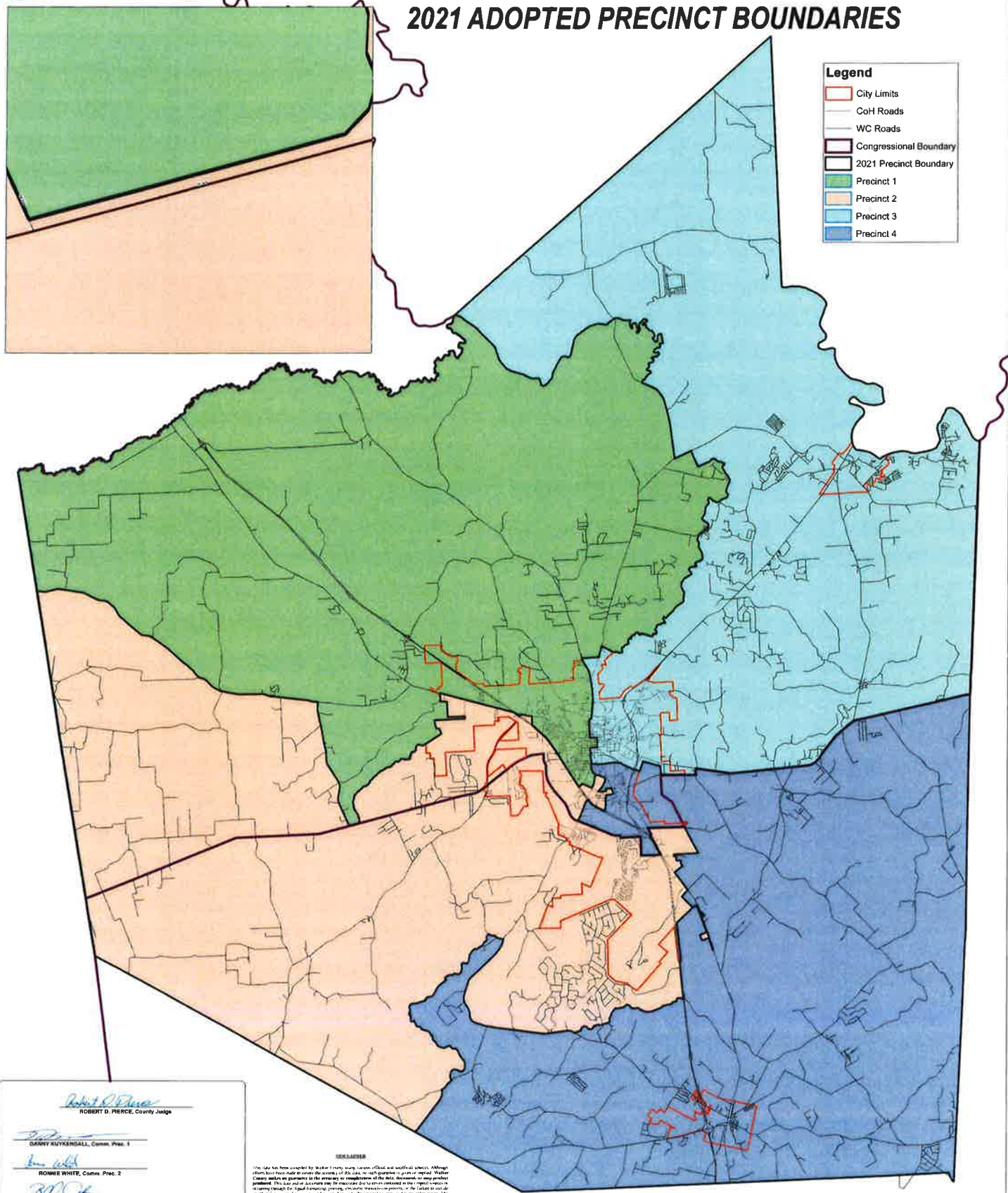


Exhibit "A"

2021 ADOPTED PRECINCT BOUNDARIES



Legend	
	City Limits
	CoH Roads
	WC Roads
	Congressional Boundary
	2021 Precinct Boundary
	Precinct 1
	Precinct 2
	Precinct 3
	Precinct 4

Robert D. Pierce
ROBERT D. PERCE, County Judge

Danny Kuykendall
DANNY KUYKENDALL, Comm. Prec. 1

Ronnie White
RONNIE WHITE, Comm. Prec. 2

Bill Daugette
BILL DAUGETTE, Comm. Prec. 3

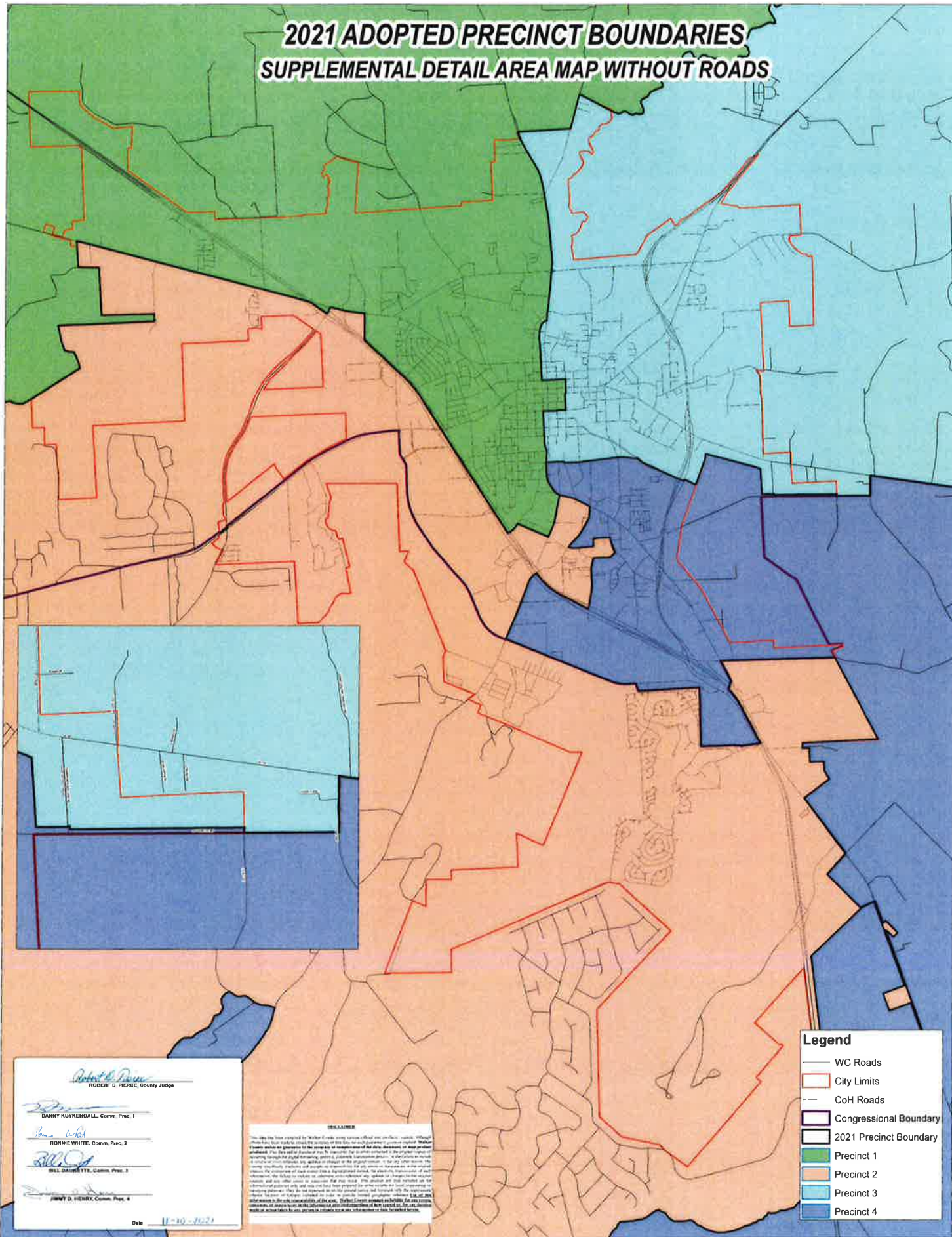
Jerry D. Henry
JERRY D. HENRY, Comm. Prec. 4

Date: 11/11/2021

DISCLAIMER

This data has been compiled by the staff of the County Judge's Office and is provided for informational purposes only. It is not intended to be used for legal purposes. The County Judge's Office is not responsible for any errors or omissions in this data. The County Judge's Office is not responsible for any damages or losses resulting from the use of this data. The County Judge's Office is not responsible for any information contained herein that is not the property of the County Judge's Office.

2021 ADOPTED PRECINCT BOUNDARIES SUPPLEMENTAL DETAIL AREA MAP WITHOUT ROADS



- Legend**
- WC Roads
 - City Limits
 - CoH Roads
 - Congressional Boundary
 - 2021 Precinct Boundary
 - Precinct 1
 - Precinct 2
 - Precinct 3
 - Precinct 4

Robert D. Pierce
ROBERT D. PIERCE, County Judge

Danny Kuykendall
DANNY KUYKENDALL, Comm. Prec. 1

Ronnie White
RONNIE WHITE, Comm. Prec. 2

Bill Daugherty
BILL DAUGHERTY, Comm. Prec. 3

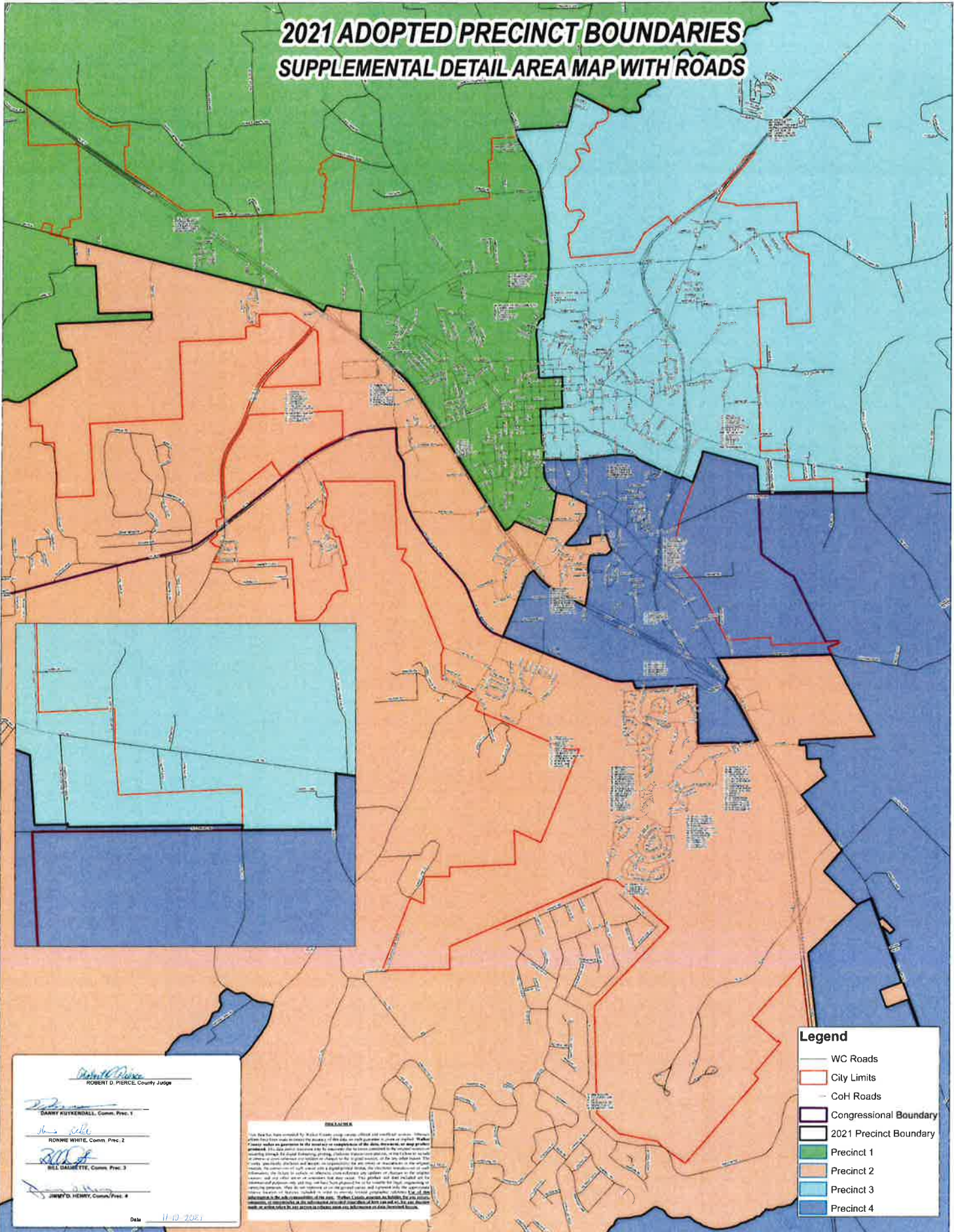
Jimmy D. Henry
JIMMY D. HENRY, Comm. Prec. 4

Date: 11-10-2021

DISCLAIMER

This map has been prepared by Walker & Co. using various official and unofficial records, although every effort has been made to ensure the accuracy of this data, no warranty is made or implied. Walker & Co. makes no guarantee for the accuracy or completeness of the data, decisions or maps produced herefrom. This map is for informational purposes only. It is not intended to be used as a legal document. No liability is assumed for any errors or omissions, whether or not caused by negligence, in the preparation, reproduction, or distribution of this map. The user assumes all responsibility for any errors or omissions, whether or not caused by negligence, in the preparation, reproduction, or distribution of this map. The user assumes all responsibility for any errors or omissions, whether or not caused by negligence, in the preparation, reproduction, or distribution of this map. The user assumes all responsibility for any errors or omissions, whether or not caused by negligence, in the preparation, reproduction, or distribution of this map.

2021 ADOPTED PRECINCT BOUNDARIES SUPPLEMENTAL DETAIL AREA MAP WITH ROADS



- Legend**
- WC Roads
 - City Limits
 - CoH Roads
 - Congressional Boundary
 - 2021 Precinct Boundary
 - Precinct 1
 - Precinct 2
 - Precinct 3
 - Precinct 4

Robert D. Pierce
 ROBERT D. PIERCE, County Judge

Darryl Kutzendall
 DARRYL KUTZENDALL, Comm. Prec. 1

Ronnie White
 RONNIE WHITE, Comm. Prec. 2

Bill Daugherty
 BILL DAUGHERTY, Comm. Prec. 3

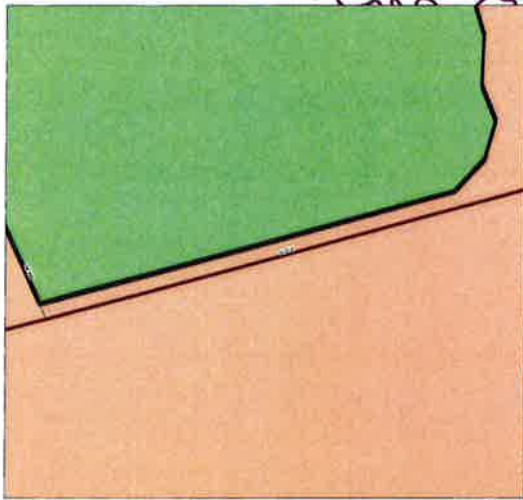
Jimmy D. Henry
 JIMMY D. HENRY, Comm. Prec. 4

Date: 11-10-2021

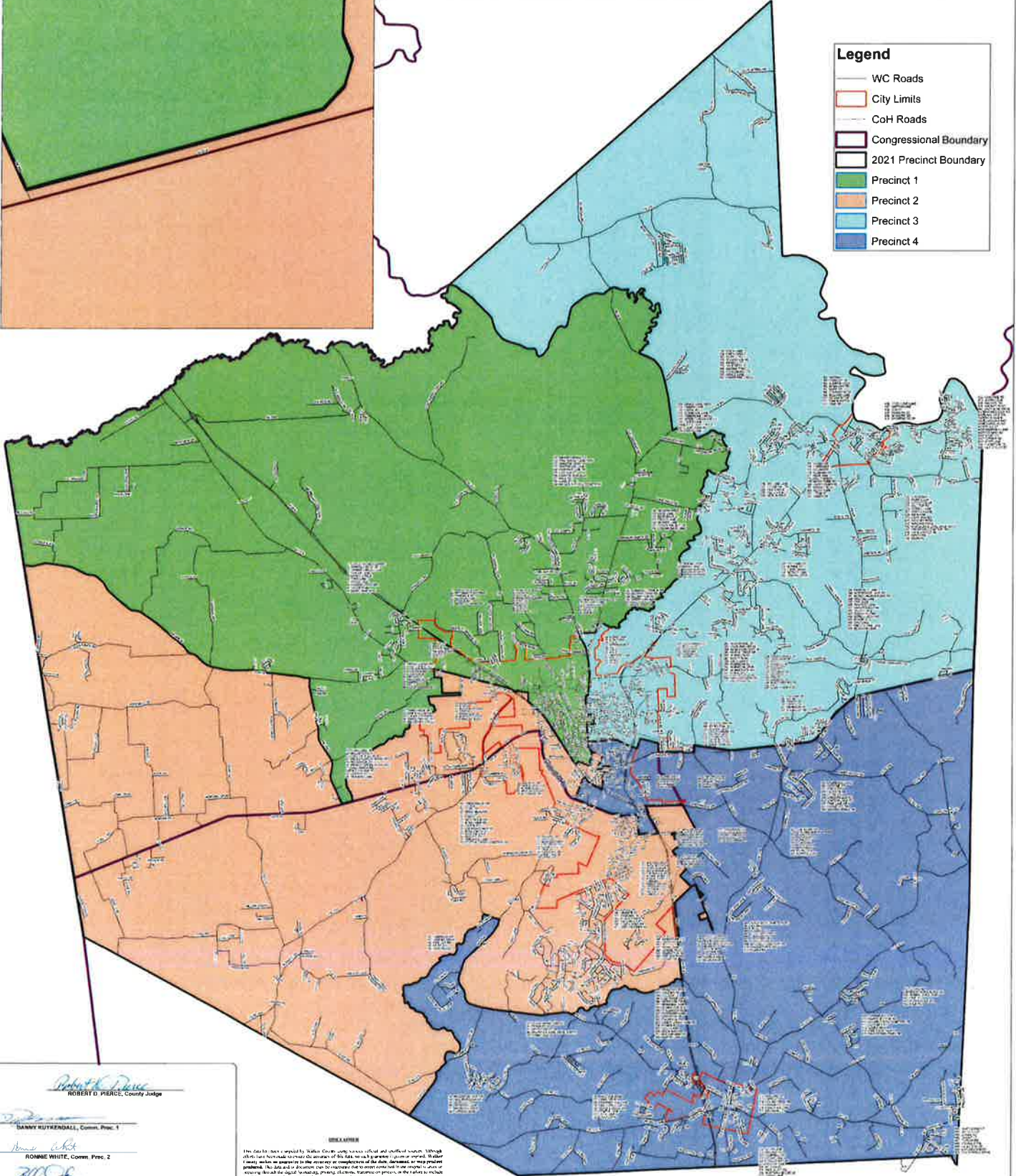
DISCLAIMER

This map has been compiled by Walker County, Georgia, using the best available data. Walker County makes no guarantee as to the accuracy or completeness of the data, nor does it accept any liability for any errors or omissions that may appear in this map. The data is provided for informational purposes only and should not be used for any legal or financial purposes. The data is provided as is and without warranty. The data is provided for informational purposes only and should not be used for any legal or financial purposes. The data is provided as is and without warranty.

2021 ADOPTED PRECINCT BOUNDARIES COUNTYWIDE SUPPLEMENTAL MAP WITH ROADS



- Legend**
- WC Roads
 - City Limits
 - CoH Roads
 - Congressional Boundary
 - 2021 Precinct Boundary
 - Precinct 1
 - Precinct 2
 - Precinct 3
 - Precinct 4



Robert D. Pierce
ROBERT D. PIERCE, County Judge

Danny Rutkendale
DANNY RUTKENDALE, Comm. Prec. 1

Ronnie White
RONNIE WHITE, Comm. Prec. 2

Bel Daugeyette
BEL DAUGEYETTE, Comm. Prec. 3

Jimmy D. Henry
JIMMY D. HENRY, Comm. Prec. 4

Date: 11-13-2021

DISCLAIMER

The data herein was created by StatSoft, Inc. using mass e-mail and certified e-mail. Although efforts were made to ensure the accuracy of this data on each geographic location or precinct boundary, the data used in this project may be incomplete or contain errors. StatSoft Company makes no warranty as to the accuracy or completeness of the data contained in this project or as to the effect of any software or hardware changes to the original version of the data. The user assumes the responsibility for any errors or omissions in the data. The user assumes the responsibility for any errors or omissions in the data. The user assumes the responsibility for any errors or omissions in the data.