



WALKER COUNTY COMMISSIONERS COURT

1100 University Avenue
Huntsville, Texas 77340
936-436-4910



DANNY PIERCE
County Judge

DANNY KUYKENDALL
Commissioner, Precinct 1

RONNIE WHITE
Commissioner, Precinct 2

AGENDA
SPECIAL SESSION
WEDNESDAY, NOVEMBER 10, 2021
3:00 P.M.
ROOM 104

BILL DAUGETTE
Commissioner, Precinct 3

JIMMY D. HENRY
Commissioner, Precinct 4

CALL TO ORDER

- Announcement by the County Judge whether a quorum is present.
- Certification that public Notice of Meeting was given in accordance with the provisions of Section 551.001 et. Seq. of the Texas Government Code.

GENERAL ITEMS

- Prayer – Pastor James Necker
- Pledge of Allegiance
- Texas Pledge – “Honor the Texas Flag, I pledge allegiance to thee, Texas, one state under God, one and indivisible”
- Citizens Input – Agenda Items

CONSENT AGENDA

None

DEPARTMENT REPORTS

None

STATUTORY AGENDA

Commissioners Court

1. Discuss and take action on canvassing of the November 2, 2021 General Election. – Judge Pierce
2. Public Hearing on Walker County 2021 Redistricting Plan. – Judge Pierce
3. Discuss and take action on Walker County 2021 Redistricting Plan. – Judge Pierce

EXECUTIVE SESSION

If during the course of the meeting covered by this notice, Commissioners Court shall determine that a closed meeting of the Court is required, then such closed meeting as authorized by Texas Government Code 551, subchapter D, will be held by the Commissioners Court at the date, hour, and place in this notice or as soon after the commencement of the meeting covered by this notice as the Commissioners Court may conveniently meet in such closed meeting concerning any and all subjects and for any and all purposes permitted by Chapter 551, subchapter D, inclusive of said Texas Government Code, including but not limited to:

Section 551.071 For the purpose of private consultation between the Commissioners Court and its attorney when the attorney’s advice with respect to pending or contemplated litigation settlement offers, and matters where the duty of the Commissioners Court counsel to his client pursuant to the Code of Professional Responsibility of the State Bar of Texas clearly conflicts with the Open Meetings Act.

Section 551.072 For the purpose of discussion with respect to the purchase, exchange, lease, or value of real property, if deliberation in an open meeting would have a detrimental effect on the position of the Commissioners Court in negotiations with a third person

Section 551.073 For the purpose of deliberation regarding prospective gifts or to deliberate a negotiated contract for prospective gift or donation to the Commissioners Court or Walker County, if deliberation in an open meeting would have a detrimental effect on the position of the Commissioners Court in negotiations with a third person.

Section 551.074 For the purpose of considering the appointment, employment, evaluation, reassignment, duties, discipline, or dismissal of a public officer or employee or to hear complaints or charges against a public officer or employee, unless such officer or employee requests a public hearing.

Section 551.076 To discuss the deployment, or specific occasions for implementation of security personnel or devices.

Section 551.086 Deliberation regarding economic development negotiations.

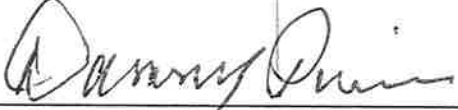
Walker County Commissioners Court – Special Session – November 10, 2021 – Agenda (cont'd)

INFORMATION ITEMS

- Public Comment – Non-agenda items
- Questions from the media
- Commissioners Court

ADJOURN

On this 5th day of November, 2021, the Executive Administrator to the County Judge filed this notice, and was posted at the main entrance of the Walker County Courthouse.



Danny Pierce, County Judge

I, the undersigned County Clerk, do hereby state that the above Notice of Meeting of the above named Commissioners' Court, is a true and correct copy of said Notice, and I posted a true and correct copy of said Notice on the Courthouse Public Notices area of Huntsville, Walker County, Texas, at a place readily accessible to the general public at all times on the 5th day of November, 2021, and said Notice remained so posted continuously for at least 72 hours proceeding the scheduled time of said meeting.

Dated this 5th day of November, 2021.



Kari A. French, County Clerk

FILED FOR POSTING
At 3:52 o'clock 2 M

NOV 05 2021

KARI FRENCH, COUNTY CLERK
WALKER COUNTY, TEXAS

By [Signature] Deputy

Summary Results Report
Walker County General Election
November 2, 2021

Final UNOFFICIAL RESULTS

Walker County

STATE PROP 1

Vote For 1

	TOTAL	VOTE %		Absentee	Early Voting	Election Day
For	3,246	84.64%	<div><div></div></div>	62	1,108	2,076
Against	589	15.36%	<div><div></div></div>	14	196	379

STATE PROP 2

Vote For 1

	TOTAL	VOTE %		Absentee	Early Voting	Election Day
For	2,292	60.09%	<div><div></div></div>	48	836	1,408
Against	1,522	39.91%	<div><div></div></div>	29	460	1,033

STATE PROP 3

Vote For 1

	TOTAL	VOTE %		Absentee	Early Voting	Election Day
For	2,791	72.74%	<div><div></div></div>	47	926	1,818
Against	1,046	27.26%	<div><div></div></div>	29	368	649

STATE PROP 4

Vote For 1

	TOTAL	VOTE %		Absentee	Early Voting	Election Day
For	2,291	61.65%	<div><div></div></div>	45	801	1,445
Against	1,425	38.35%	<div><div></div></div>	30	466	929

STATE PROP 5

Vote For 1

	TOTAL	VOTE %		Absentee	Early Voting	Election Day
For	2,388	63.90%	<div><div></div></div>	57	834	1,497
Against	1,349	36.10%	<div><div></div></div>	18	444	887

STATE PROP 6

Vote For 1

	TOTAL	VOTE %		Absentee	Early Voting	Election Day
For	3,417	89.26%	<div><div></div></div>	61	1,175	2,181
Against	411	10.74%	<div><div></div></div>	15	126	270

STATE PROP 7

Vote For 1

	TOTAL	VOTE %		Absentee	Early Voting	Election Day
For	3,456	90.19%	<div><div></div></div>	69	1,184	2,203
Against	376	9.81%	<div><div></div></div>	7	122	247

STATE PROP 8

Vote For 1

	TOTAL	VOTE %		Absentee	Early Voting	Election Day
For	3,468	90.71%	<div><div></div></div>	68	1,163	2,237
Against	355	9.29%	<div><div></div></div>	8	134	213



DIANA L. McRAE
TAX ASSESSOR-COLLECTOR
COUNTY ELECTION OFFICER

Voter Registration/Elections Department
Julie Cooper, Elections Manager
1301 Sam Houston Avenue, Suite 114
Huntsville, Texas 77340
(936) 436-4957 Office / 436-4961 Fax

REPORT ON ELECTION RETURNS
November 2, 2021 General Election

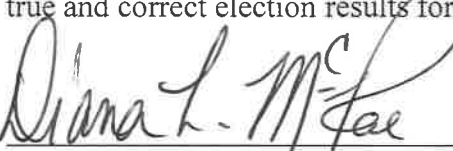
Pursuant to Section 67 of the Texas Election Code, I, Diana McRae, Tax Assessor-Collector/ County Election Officer, certify the election returns to Walker County Commissioners Court, the Local Canvassing Authority, for the purpose of canvassing the election below:

General Election: State Constitutional Amendment Election

Registered Voters in the District: 34,671 Total Ballots Cast: 3,900

Candidates/Propositions	Early Voting Report	Election Day Report	Election Totals
State Proposition 1			
For	1170	2076	3246
Against	210	379	589
State Proposition 2			
For	884	1408	2292
Against	489	1033	1522
State Proposition 3			
For	973	1818	2791
Against	397	649	1046
State Proposition 4			
For	846	1445	2291
Against	496	929	1425
State Proposition 5			
For	891	1497	2388
Against	462	887	1349
State Proposition 6			
For	1236	2181	3417
Against	141	270	411
State Proposition 7			
For	1253	2203	3456
Against	129	247	376
State Proposition 8			
For	1231	2237	3468
Against	142	213	355

I, Diana McRae, Tax Assessor-Collector of Walker County, do hereby certify that the above election return is true and correct election results for Walker County’s General Election held on the 2nd day of November 2021.

 11/5/2021
Diana L. McRae, Date
County Election Officer
Tax Assessor-Collector

Attachments: (1) Central Accumulation Report – Canvas Summary
(2) Precinct by Precinct CAS Summary

PRECINCT 101

STATE PROP 1

Vote For 1

	TOTAL	Absentee	Early Voting	Election Day
For	33	1	14	18
Against	8	0	5	3
Total Votes Cast	41	1	19	21

STATE PROP 2

Vote For 1

	TOTAL	Absentee	Early Voting	Election Day
For	22	1	9	12
Against	19	0	10	9
Total Votes Cast	41	1	19	21

STATE PROP 3

Vote For 1

	TOTAL	Absentee	Early Voting	Election Day
For	19	0	11	8
Against	21	1	7	13
Total Votes Cast	40	1	18	21

STATE PROP 4

Vote For 1

	TOTAL	Absentee	Early Voting	Election Day
For	16	1	8	7
Against	22	0	10	12
Total Votes Cast	38	1	18	19

STATE PROP 5

Vote For 1

	TOTAL	Absentee	Early Voting	Election Day
For	21	1	10	10
Against	19	0	8	11
Total Votes Cast	40	1	18	21

STATE PROP 6

Vote For 1

	TOTAL	Absentee	Early Voting	Election Day
For	34	1	15	18
Against	7	0	4	3
Total Votes Cast	41	1	19	21

PRECINCT 101

STATE PROP 7

Vote For 1

	TOTAL	Absentee	Early Voting	Election Day
For	36	1	16	19
Against	6	0	4	2
Total Votes Cast	42	1	20	21

STATE PROP 8

Vote For 1

	TOTAL	Absentee	Early Voting	Election Day
For	37	1	15	21
Against	3	0	3	0
Total Votes Cast	40	1	18	21

PRECINCT 102

STATE PROP 1

Vote For 1

	TOTAL	Absentee	Early Voting	Election Day
For	374	10	153	211
Against	75	5	34	36
Total Votes Cast	449	15	187	247

STATE PROP 2

Vote For 1

	TOTAL	Absentee	Early Voting	Election Day
For	297	11	122	164
Against	150	4	65	81
Total Votes Cast	447	15	187	245

STATE PROP 3

Vote For 1

	TOTAL	Absentee	Early Voting	Election Day
For	280	8	118	154
Against	168	7	68	93
Total Votes Cast	448	15	186	247

STATE PROP 4

Vote For 1

	TOTAL	Absentee	Early Voting	Election Day
For	247	6	103	138
Against	187	9	77	101
Total Votes Cast	434	15	180	239

STATE PROP 5

Vote For 1

	TOTAL	Absentee	Early Voting	Election Day
For	254	9	107	138
Against	183	6	75	102
Total Votes Cast	437	15	182	240

STATE PROP 6

Vote For 1

	TOTAL	Absentee	Early Voting	Election Day
For	403	12	162	229
Against	44	3	22	19
Total Votes Cast	447	15	184	248

PRECINCT 102

STATE PROP 7

Vote For 1

	TOTAL	Absentee	Early Voting	Election Day
For	395	13	163	219
Against	50	2	23	25
Total Votes Cast	445	15	186	244

STATE PROP 8

Vote For 1

	TOTAL	Absentee	Early Voting	Election Day
For	397	14	162	221
Against	50	1	23	26
Total Votes Cast	447	15	185	247

PRECINCT 103

STATE PROP 1

Vote For 1

	TOTAL	Absentee	Early Voting	Election Day
For	179	3	57	119
Against	35	0	11	24
Total Votes Cast	214	3	68	143

STATE PROP 2

Vote For 1

	TOTAL	Absentee	Early Voting	Election Day
For	113	0	36	77
Against	100	3	32	65
Total Votes Cast	213	3	68	142

STATE PROP 3

Vote For 1

	TOTAL	Absentee	Early Voting	Election Day
For	169	3	52	114
Against	46	0	16	30
Total Votes Cast	215	3	68	144

STATE PROP 4

Vote For 1

	TOTAL	Absentee	Early Voting	Election Day
For	129	1	40	88
Against	82	2	28	52
Total Votes Cast	211	3	68	140

STATE PROP 5

Vote For 1

	TOTAL	Absentee	Early Voting	Election Day
For	135	2	39	94
Against	75	1	29	45
Total Votes Cast	210	3	68	139

STATE PROP 6

Vote For 1

	TOTAL	Absentee	Early Voting	Election Day
For	191	3	56	132
Against	21	0	11	10
Total Votes Cast	212	3	67	142

PRECINCT 103

STATE PROP 7

Vote For 1

	TOTAL	Absentee	Early Voting	Election Day
For	183	3	55	125
Against	31	0	13	18
Total Votes Cast	214	3	68	143

STATE PROP 8

Vote For 1

	TOTAL	Absentee	Early Voting	Election Day
For	192	3	57	132
Against	21	0	11	10
Total Votes Cast	213	3	68	142

PROPOSITION A ESD3 Existing

Vote For 1

	TOTAL	Absentee	Early Voting	Election Day
For	80	0	23	57
Against	37	2	10	25
Total Votes Cast	117	2	33	82

PROPOSITION B ESD3 Existing

Vote For 1

	TOTAL	Absentee	Early Voting	Election Day
For	72	0	22	50
Against	44	2	11	31
Total Votes Cast	116	2	33	81

PROPOSITION A ESD3 New

Vote For 1

	TOTAL	Absentee	Early Voting	Election Day
For	61	0	21	40
Against	27	0	12	15
Total Votes Cast	88	0	33	55

PROPOSITION B ESD3 New

Vote For 1

	TOTAL	Absentee	Early Voting	Election Day
For	52	0	19	33
Against	36	0	14	22
Total Votes Cast	88	0	33	55

PRECINCT 104

STATE PROP 1

Vote For 1

	TOTAL	Absentee	Early Voting	Election Day
For	202	2	86	114
Against	37	0	11	26
Total Votes Cast	239	2	97	140

STATE PROP 2

Vote For 1

	TOTAL	Absentee	Early Voting	Election Day
For	108	0	45	63
Against	130	2	51	77
Total Votes Cast	238	2	96	140

STATE PROP 3

Vote For 1

	TOTAL	Absentee	Early Voting	Election Day
For	187	2	75	110
Against	50	0	20	30
Total Votes Cast	237	2	95	140

STATE PROP 4

Vote For 1

	TOTAL	Absentee	Early Voting	Election Day
For	150	1	62	87
Against	88	1	34	53
Total Votes Cast	238	2	96	140

STATE PROP 5

Vote For 1

	TOTAL	Absentee	Early Voting	Election Day
For	150	2	62	86
Against	89	0	35	54
Total Votes Cast	239	2	97	140

STATE PROP 6

Vote For 1

	TOTAL	Absentee	Early Voting	Election Day
For	220	2	93	125
Against	18	0	3	15
Total Votes Cast	238	2	96	140

PRECINCT 104

STATE PROP 7

Vote For 1

	TOTAL	Absentee	Early Voting	Election Day
For	224	1	94	129
Against	15	1	3	11
Total Votes Cast	239	2	97	140

STATE PROP 8

Vote For 1

	TOTAL	Absentee	Early Voting	Election Day
For	213	2	87	124
Against	25	0	9	16
Total Votes Cast	238	2	96	140

PROPOSITION A ESD3 Existing

Vote For 1

	TOTAL	Absentee	Early Voting	Election Day
For	68	0	22	46
Against	38	0	17	21
Total Votes Cast	106	0	39	67

PROPOSITION B ESD3 Existing

Vote For 1

	TOTAL	Absentee	Early Voting	Election Day
For	62	0	22	40
Against	42	0	17	25
Total Votes Cast	104	0	39	65

PROPOSITION A ESD3 New

Vote For 1

	TOTAL	Absentee	Early Voting	Election Day
For	64	0	30	34
Against	35	0	12	23
Total Votes Cast	99	0	42	57

PROPOSITION B ESD3 New

Vote For 1

	TOTAL	Absentee	Early Voting	Election Day
For	61	0	29	32
Against	38	0	13	25
Total Votes Cast	99	0	42	57

PRECINCT 201

STATE PROP 1

Vote For 1

	TOTAL	Absentee	Early Voting	Election Day
For	151	3	71	77
Against	24	1	11	12
Total Votes Cast	175	4	82	89

STATE PROP 2

Vote For 1

	TOTAL	Absentee	Early Voting	Election Day
For	131	2	63	66
Against	45	2	19	24
Total Votes Cast	176	4	82	90

STATE PROP 3

Vote For 1

	TOTAL	Absentee	Early Voting	Election Day
For	120	3	51	66
Against	57	1	31	25
Total Votes Cast	177	4	82	91

STATE PROP 4

Vote For 1

	TOTAL	Absentee	Early Voting	Election Day
For	108	3	56	49
Against	62	1	25	36
Total Votes Cast	170	4	81	85

STATE PROP 5

Vote For 1

	TOTAL	Absentee	Early Voting	Election Day
For	119	4	57	58
Against	51	0	24	27
Total Votes Cast	170	4	81	85

STATE PROP 6

Vote For 1

	TOTAL	Absentee	Early Voting	Election Day
For	162	3	78	81
Against	12	1	4	7
Total Votes Cast	174	4	82	88

PRECINCT 201

STATE PROP 7

Vote For 1

	TOTAL	Absentee	Early Voting	Election Day
For	155	3	74	78
Against	19	1	8	10
Total Votes Cast	174	4	82	88

STATE PROP 8

Vote For 1

	TOTAL	Absentee	Early Voting	Election Day
For	154	3	69	82
Against	21	1	13	7
Total Votes Cast	175	4	82	89

PRECINCT 203

STATE PROP 1

Vote For 1

	TOTAL	Absentee	Early Voting	Election Day
For	60	0	10	50
Against	7	0	2	5
Total Votes Cast	67	0	12	55

STATE PROP 2

Vote For 1

	TOTAL	Absentee	Early Voting	Election Day
For	25	0	3	22
Against	41	0	9	32
Total Votes Cast	66	0	12	54

STATE PROP 3

Vote For 1

	TOTAL	Absentee	Early Voting	Election Day
For	59	0	9	50
Against	10	0	3	7
Total Votes Cast	69	0	12	57

STATE PROP 4

Vote For 1

	TOTAL	Absentee	Early Voting	Election Day
For	52	0	7	45
Against	15	0	5	10
Total Votes Cast	67	0	12	55

STATE PROP 5

Vote For 1

	TOTAL	Absentee	Early Voting	Election Day
For	47	0	9	38
Against	19	0	3	16
Total Votes Cast	66	0	12	54

STATE PROP 6

Vote For 1

	TOTAL	Absentee	Early Voting	Election Day
For	62	0	10	52
Against	6	0	2	4
Total Votes Cast	68	0	12	56

PRECINCT 203

STATE PROP 7

Vote For 1

	TOTAL	Absentee	Early Voting	Election Day
For	60	0	11	49
Against	7	0	1	6
Total Votes Cast	67	0	12	55

STATE PROP 8

Vote For 1

	TOTAL	Absentee	Early Voting	Election Day
For	59	0	11	48
Against	9	0	1	8
Total Votes Cast	68	0	12	56

PRECINCT 204

STATE PROP 1

Vote For 1

	TOTAL	Absentee	Early Voting	Election Day
For	306	7	105	194
Against	61	2	17	42
Total Votes Cast	367	9	122	236

STATE PROP 2

Vote For 1

	TOTAL	Absentee	Early Voting	Election Day
For	209	5	76	128
Against	156	4	46	106
Total Votes Cast	365	9	122	234

STATE PROP 3

Vote For 1

	TOTAL	Absentee	Early Voting	Election Day
For	277	9	87	181
Against	88	0	35	53
Total Votes Cast	365	9	122	234

STATE PROP 4

Vote For 1

	TOTAL	Absentee	Early Voting	Election Day
For	221	5	76	140
Against	138	4	45	89
Total Votes Cast	359	9	121	229

STATE PROP 5

Vote For 1

	TOTAL	Absentee	Early Voting	Election Day
For	233	7	77	149
Against	129	2	45	82
Total Votes Cast	362	9	122	231

STATE PROP 6

Vote For 1

	TOTAL	Absentee	Early Voting	Election Day
For	328	7	113	208
Against	38	2	9	27
Total Votes Cast	366	9	122	235

PRECINCT 204

STATE PROP 7

Vote For 1

	TOTAL	Absentee	Early Voting	Election Day
For	331	9	117	205
Against	36	0	5	31
Total Votes Cast	367	9	122	236

STATE PROP 8

Vote For 1

	TOTAL	Absentee	Early Voting	Election Day
For	335	8	117	210
Against	31	0	5	26
Total Votes Cast	366	8	122	236

PROPOSITION A ESD3 Existing

Vote For 1

	TOTAL	Absentee	Early Voting	Election Day
For	37	0	16	21
Against	21	2	5	14
Total Votes Cast	58	2	21	35

PROPOSITION B ESD3 Existing

Vote For 1

	TOTAL	Absentee	Early Voting	Election Day
For	31	0	13	18
Against	26	2	8	16
Total Votes Cast	57	2	21	34

PROPOSITION A ESD3 New

Vote For 1

	TOTAL	Absentee	Early Voting	Election Day
For	55	0	9	46
Against	28	0	6	22
Total Votes Cast	83	0	15	68

PROPOSITION B ESD3 New

Vote For 1

	TOTAL	Absentee	Early Voting	Election Day
For	52	0	8	44
Against	31	0	7	24
Total Votes Cast	83	0	15	68

PRECINCT 205

STATE PROP 1

Vote For 1

	TOTAL	Absentee	Early Voting	Election Day
For	587	15	281	291
Against	71	3	33	35
Total Votes Cast	658	18	314	326

STATE PROP 2

Vote For 1

	TOTAL	Absentee	Early Voting	Election Day
For	453	16	220	217
Against	200	3	89	108
Total Votes Cast	653	19	309	325

STATE PROP 3

Vote For 1

	TOTAL	Absentee	Early Voting	Election Day
For	494	8	246	240
Against	164	10	66	88
Total Votes Cast	658	18	312	328

STATE PROP 4

Vote For 1

	TOTAL	Absentee	Early Voting	Election Day
For	415	9	205	201
Against	209	8	93	108
Total Votes Cast	624	17	298	309

STATE PROP 5

Vote For 1

	TOTAL	Absentee	Early Voting	Election Day
For	461	11	223	227
Against	172	6	81	85
Total Votes Cast	633	17	304	312

STATE PROP 6

Vote For 1

	TOTAL	Absentee	Early Voting	Election Day
For	607	14	293	300
Against	50	4	21	25
Total Votes Cast	657	18	314	325

PRECINCT 205

STATE PROP 7

Vote For 1

	TOTAL	Absentee	Early Voting	Election Day
For	596	17	288	291
Against	61	1	27	33
Total Votes Cast	657	18	315	324

STATE PROP 8

Vote For 1

	TOTAL	Absentee	Early Voting	Election Day
For	607	17	287	303
Against	49	2	25	22
Total Votes Cast	656	19	312	325

PRECINCT 206

STATE PROP 1

Vote For 1

	TOTAL	Absentee	Early Voting	Election Day
For	128	3	39	86
Against	26	0	11	15
Total Votes Cast	154	3	50	101

STATE PROP 2

Vote For 1

	TOTAL	Absentee	Early Voting	Election Day
For	94	1	31	62
Against	59	2	18	39
Total Votes Cast	153	3	49	101

STATE PROP 3

Vote For 1

	TOTAL	Absentee	Early Voting	Election Day
For	90	1	26	63
Against	65	2	25	38
Total Votes Cast	155	3	51	101

STATE PROP 4

Vote For 1

	TOTAL	Absentee	Early Voting	Election Day
For	79	2	21	56
Against	69	1	28	40
Total Votes Cast	148	3	49	96

STATE PROP 5

Vote For 1

	TOTAL	Absentee	Early Voting	Election Day
For	77	3	20	54
Against	70	0	28	42
Total Votes Cast	147	3	48	96

STATE PROP 6

Vote For 1

	TOTAL	Absentee	Early Voting	Election Day
For	134	3	43	88
Against	20	0	8	12
Total Votes Cast	154	3	51	100

PRECINCT 206

STATE PROP 7

Vote For 1

	TOTAL	Absentee	Early Voting	Election Day
For	134	3	43	88
Against	20	0	8	12
Total Votes Cast	154	3	51	100

STATE PROP 8

Vote For 1

	TOTAL	Absentee	Early Voting	Election Day
For	130	2	43	85
Against	23	1	8	14
Total Votes Cast	153	3	51	99

PRECINCT 301

STATE PROP 1

Vote For 1

	TOTAL	Absentee	Early Voting	Election Day
For	160	3	53	104
Against	33	0	12	21
Total Votes Cast	193	3	65	125

STATE PROP 2

Vote For 1

	TOTAL	Absentee	Early Voting	Election Day
For	148	0	54	94
Against	45	3	10	32
Total Votes Cast	193	3	64	126

STATE PROP 3

Vote For 1

	TOTAL	Absentee	Early Voting	Election Day
For	121	2	44	75
Against	72	1	18	53
Total Votes Cast	193	3	62	128

STATE PROP 4

Vote For 1

	TOTAL	Absentee	Early Voting	Election Day
For	113	3	41	69
Against	74	0	21	53
Total Votes Cast	187	3	62	122

STATE PROP 5

Vote For 1

	TOTAL	Absentee	Early Voting	Election Day
For	118	3	44	71
Against	72	0	19	53
Total Votes Cast	190	3	63	124

STATE PROP 6

Vote For 1

	TOTAL	Absentee	Early Voting	Election Day
For	167	2	58	107
Against	31	1	9	21
Total Votes Cast	198	3	67	128

PRECINCT 301

STATE PROP 7

Vote For 1

	TOTAL	Absentee	Early Voting	Election Day
For	180	2	62	116
Against	15	1	4	10
Total Votes Cast	195	3	66	126

STATE PROP 8

Vote For 1

	TOTAL	Absentee	Early Voting	Election Day
For	179	2	60	117
Against	15	1	5	9
Total Votes Cast	194	3	65	126

PRECINCT 302

STATE PROP 1

Vote For 1

	TOTAL	Absentee	Early Voting	Election Day
For	47	0	18	29
Against	11	0	3	8
Total Votes Cast	58	0	21	37

STATE PROP 2

Vote For 1

	TOTAL	Absentee	Early Voting	Election Day
For	34	0	14	20
Against	23	0	7	16
Total Votes Cast	57	0	21	36

STATE PROP 3

Vote For 1

	TOTAL	Absentee	Early Voting	Election Day
For	40	0	11	29
Against	18	0	10	8
Total Votes Cast	58	0	21	37

STATE PROP 4

Vote For 1

	TOTAL	Absentee	Early Voting	Election Day
For	44	0	19	25
Against	13	0	2	11
Total Votes Cast	57	0	21	36

STATE PROP 5

Vote For 1

	TOTAL	Absentee	Early Voting	Election Day
For	37	0	14	23
Against	19	0	7	12
Total Votes Cast	56	0	21	35

STATE PROP 6

Vote For 1

	TOTAL	Absentee	Early Voting	Election Day
For	55	0	18	37
Against	4	0	3	1
Total Votes Cast	59	0	21	38

PRECINCT 302

STATE PROP 7

Vote For 1

	TOTAL	Absentee	Early Voting	Election Day
For	53	0	18	35
Against	4	0	3	1
Total Votes Cast	57	0	21	36

STATE PROP 8

Vote For 1

	TOTAL	Absentee	Early Voting	Election Day
For	54	0	19	35
Against	3	0	2	1
Total Votes Cast	57	0	21	36

PROPOSITION A ESD3 Existing

Vote For 1

	TOTAL	Absentee	Early Voting	Election Day
For	4	0	2	2
Against	2	0	0	2
Total Votes Cast	6	0	2	4

PROPOSITION B ESD3 Existing

Vote For 1

	TOTAL	Absentee	Early Voting	Election Day
For	4	0	2	2
Against	2	0	0	2
Total Votes Cast	6	0	2	4

PROPOSITION A ESD3 New

Vote For 1

	TOTAL	Absentee	Early Voting	Election Day
For	21	0	7	14
Against	4	0	2	2
Total Votes Cast	25	0	9	16

PROPOSITION B ESD3 New

Vote For 1

	TOTAL	Absentee	Early Voting	Election Day
For	17	0	6	11
Against	8	0	3	5
Total Votes Cast	25	0	9	16

PRECINCT 303

STATE PROP 1

Vote For 1

	TOTAL	Absentee	Early Voting	Election Day
For	49	2	18	29
Against	12	0	0	12
Total Votes Cast	61	2	18	41

STATE PROP 2

Vote For 1

	TOTAL	Absentee	Early Voting	Election Day
For	34	1	13	20
Against	28	1	5	22
Total Votes Cast	62	2	18	42

STATE PROP 3

Vote For 1

	TOTAL	Absentee	Early Voting	Election Day
For	49	1	17	31
Against	13	1	1	11
Total Votes Cast	62	2	18	42

STATE PROP 4

Vote For 1

	TOTAL	Absentee	Early Voting	Election Day
For	44	2	13	29
Against	16	0	5	11
Total Votes Cast	60	2	18	40

STATE PROP 5

Vote For 1

	TOTAL	Absentee	Early Voting	Election Day
For	41	1	13	27
Against	21	1	5	15
Total Votes Cast	62	2	18	42

STATE PROP 6

Vote For 1

	TOTAL	Absentee	Early Voting	Election Day
For	58	1	18	39
Against	4	1	0	3
Total Votes Cast	62	2	18	42

PRECINCT 303

STATE PROP 7

Vote For 1

	TOTAL	Absentee	Early Voting	Election Day
For	53	1	15	37
Against	9	1	3	5
Total Votes Cast	62	2	18	42

STATE PROP 8

Vote For 1

	TOTAL	Absentee	Early Voting	Election Day
For	55	1	15	39
Against	7	1	3	3
Total Votes Cast	62	2	18	42

PRECINCT 304

STATE PROP 1

Vote For 1

	TOTAL	Absentee	Early Voting	Election Day
For	269	3	85	181
Against	66	1	28	37
Total Votes Cast	335	4	113	218

STATE PROP 2

Vote For 1

	TOTAL	Absentee	Early Voting	Election Day
For	199	3	71	125
Against	136	1	42	93
Total Votes Cast	335	4	113	218

STATE PROP 3

Vote For 1

	TOTAL	Absentee	Early Voting	Election Day
For	262	3	82	177
Against	75	1	31	43
Total Votes Cast	337	4	113	220

STATE PROP 4

Vote For 1

	TOTAL	Absentee	Early Voting	Election Day
For	206	2	64	140
Against	120	2	46	72
Total Votes Cast	326	4	110	212

STATE PROP 5

Vote For 1

	TOTAL	Absentee	Early Voting	Election Day
For	224	2	71	151
Against	104	2	41	61
Total Votes Cast	328	4	112	212

STATE PROP 6

Vote For 1

	TOTAL	Absentee	Early Voting	Election Day
For	301	3	100	198
Against	34	1	13	20
Total Votes Cast	335	4	113	218

PRECINCT 304

STATE PROP 7

Vote For 1

	TOTAL	Absentee	Early Voting	Election Day
For	312	4	103	205
Against	25	0	10	15
Total Votes Cast	337	4	113	220

STATE PROP 8

Vote For 1

	TOTAL	Absentee	Early Voting	Election Day
For	309	3	101	205
Against	28	1	12	15
Total Votes Cast	337	4	113	220

PROPOSITION A ESD3 Existing

Vote For 1

	TOTAL	Absentee	Early Voting	Election Day
For	10	0	4	6
Against	3	0	1	2
Total Votes Cast	13	0	5	8

PROPOSITION B ESD3 Existing

Vote For 1

	TOTAL	Absentee	Early Voting	Election Day
For	10	0	4	6
Against	4	0	2	2
Total Votes Cast	14	0	6	8

PRECINCT 401

STATE PROP 1

Vote For 1

	TOTAL	Absentee	Early Voting	Election Day
For	132	5	44	83
Against	20	0	6	14
Total Votes Cast	152	5	50	97

STATE PROP 2

Vote For 1

	TOTAL	Absentee	Early Voting	Election Day
For	107	4	37	66
Against	43	1	12	30
Total Votes Cast	150	5	49	96

STATE PROP 3

Vote For 1

	TOTAL	Absentee	Early Voting	Election Day
For	99	3	30	66
Against	52	2	19	31
Total Votes Cast	151	5	49	97

STATE PROP 4

Vote For 1

	TOTAL	Absentee	Early Voting	Election Day
For	89	5	34	50
Against	60	0	13	47
Total Votes Cast	149	5	47	97

STATE PROP 5

Vote For 1

	TOTAL	Absentee	Early Voting	Election Day
For	88	5	33	50
Against	61	0	15	46
Total Votes Cast	149	5	48	96

STATE PROP 6

Vote For 1

	TOTAL	Absentee	Early Voting	Election Day
For	134	5	45	84
Against	18	0	4	14
Total Votes Cast	152	5	49	98

PRECINCT 401

STATE PROP 7

Vote For 1

	TOTAL	Absentee	Early Voting	Election Day
For	144	5	49	90
Against	10	0	1	9
Total Votes Cast	154	5	50	99

STATE PROP 8

Vote For 1

	TOTAL	Absentee	Early Voting	Election Day
For	140	5	44	91
Against	12	0	5	7
Total Votes Cast	152	5	49	98

PRECINCT 403

STATE PROP 1

Vote For 1

	TOTAL	Absentee	Early Voting	Election Day
For	107	2	19	86
Against	16	0	1	15
Total Votes Cast	123	2	20	101

STATE PROP 2

Vote For 1

	TOTAL	Absentee	Early Voting	Election Day
For	48	0	7	41
Against	76	2	14	60
Total Votes Cast	124	2	21	101

STATE PROP 3

Vote For 1

	TOTAL	Absentee	Early Voting	Election Day
For	106	2	18	86
Against	17	0	2	15
Total Votes Cast	123	2	20	101

STATE PROP 4

Vote For 1

	TOTAL	Absentee	Early Voting	Election Day
For	80	1	15	64
Against	42	1	6	35
Total Votes Cast	122	2	21	99

STATE PROP 5

Vote For 1

	TOTAL	Absentee	Early Voting	Election Day
For	86	2	14	70
Against	37	0	7	30
Total Votes Cast	123	2	21	100

STATE PROP 6

Vote For 1

	TOTAL	Absentee	Early Voting	Election Day
For	112	2	18	92
Against	11	0	2	9
Total Votes Cast	123	2	20	101

PRECINCT 403

STATE PROP 7

Vote For 1

	TOTAL	Absentee	Early Voting	Election Day
For	112	2	20	90
Against	11	0	0	11
Total Votes Cast	123	2	20	101

STATE PROP 8

Vote For 1

	TOTAL	Absentee	Early Voting	Election Day
For	111	2	20	89
Against	12	0	0	12
Total Votes Cast	123	2	20	101

PRECINCT 404

STATE PROP 1

Vote For 1

	TOTAL	Absentee	Early Voting	Election Day
For	462	3	55	404
Against	87	2	11	74
Total Votes Cast	549	5	66	478

STATE PROP 2

Vote For 1

	TOTAL	Absentee	Early Voting	Election Day
For	270	4	35	231
Against	271	1	31	239
Total Votes Cast	541	5	66	470

STATE PROP 3

Vote For 1

	TOTAL	Absentee	Early Voting	Election Day
For	419	2	49	368
Against	130	3	16	111
Total Votes Cast	549	5	65	479

STATE PROP 4

Vote For 1

	TOTAL	Absentee	Early Voting	Election Day
For	298	4	37	257
Against	228	1	28	199
Total Votes Cast	526	5	65	456

STATE PROP 5

Vote For 1

	TOTAL	Absentee	Early Voting	Election Day
For	297	5	41	251
Against	228	0	22	206
Total Votes Cast	525	5	63	457

STATE PROP 6

Vote For 1

	TOTAL	Absentee	Early Voting	Election Day
For	449	3	55	391
Against	93	2	11	80
Total Votes Cast	542	5	66	471

PRECINCT 404

STATE PROP 7

Vote For 1

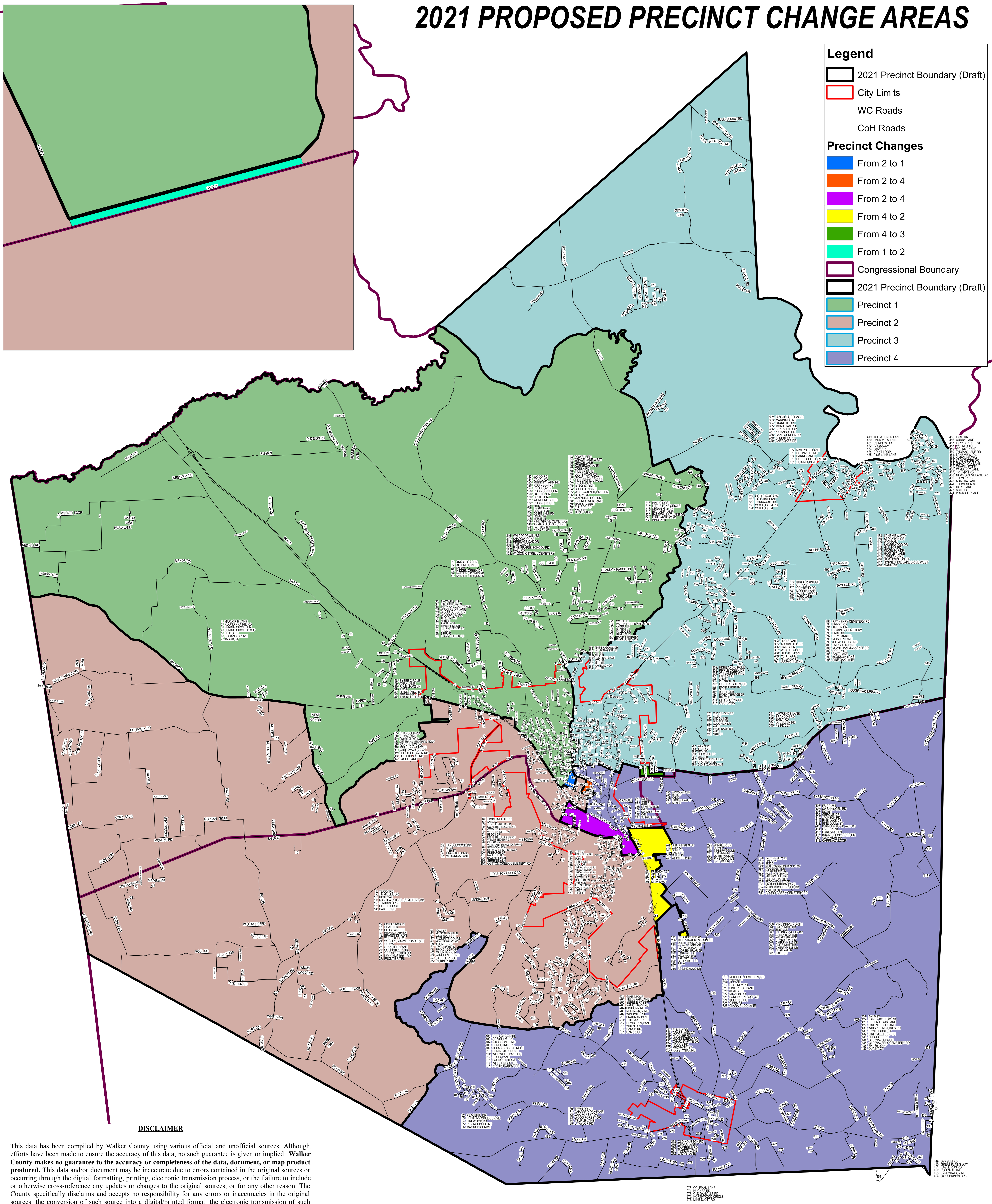
	TOTAL	Absentee	Early Voting	Election Day
For	488	5	56	427
Against	57	0	9	48
Total Votes Cast	545	5	65	475

STATE PROP 8

Vote For 1

	TOTAL	Absentee	Early Voting	Election Day
For	496	5	56	435
Against	46	0	9	37
Total Votes Cast	542	5	65	472

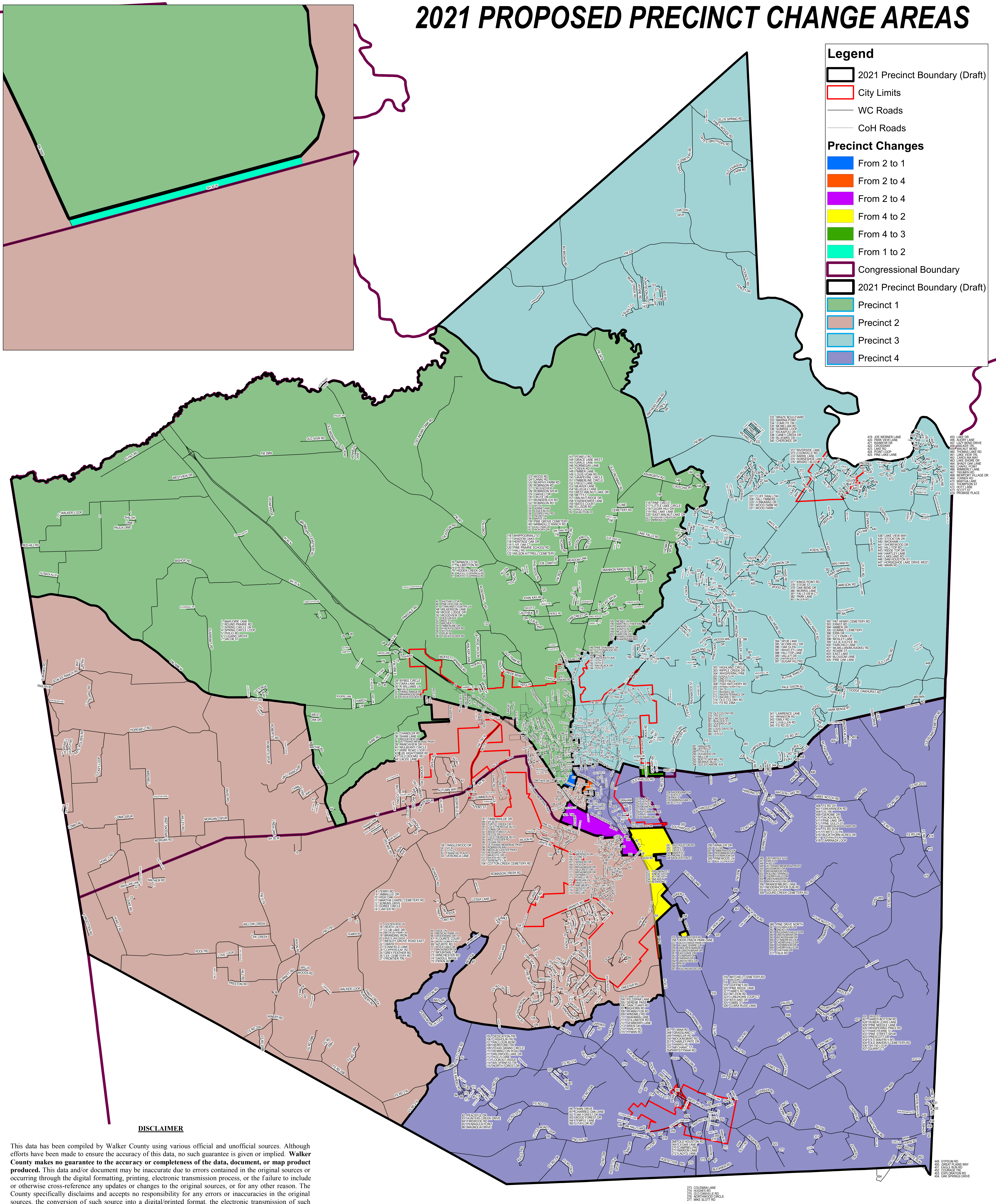
2021 PROPOSED PRECINCT CHANGE AREAS



DISCLAIMER

This data has been compiled by Walker County using various official and unofficial sources. Although efforts have been made to ensure the accuracy of this data, no such guarantee is given or implied. **Walker County makes no guarantee to the accuracy or completeness of the data, document, or map product produced.** This data and/or document may be inaccurate due to errors contained in the original sources or occurring through the digital formatting, printing, electronic transmission process, or the failure to include or otherwise cross-reference any updates or changes to the original sources, or for any other reason. The County specifically disclaims and accepts no responsibility for any errors or inaccuracies in the original sources, the conversion of such source into a digital/printed format, the electronic transmission of such information, the failure to include or otherwise cross-reference any updates or changes to the original sources, and any other errors or omissions that may occur. This product and data included are for informational purposes only and may not have been prepared for or be suitable for legal, engineering or surveying purposes. They do not represent an on-the-ground survey and represent only the approximate relative location of features included in order to provide limited geographic reference. **Use of this information is the sole responsibility of the user. Walker County assumes no liability for any errors, omissions, or inaccuracies in the information provided regardless of how caused or, for any decision made or action taken by any person in reliance upon any information or data furnished herein.**

2021 PROPOSED PRECINCT CHANGE AREAS



DISCLAIMER

This data has been compiled by Walker County using various official and unofficial sources. Although efforts have been made to ensure the accuracy of this data, no such guarantee is given or implied. **Walker County makes no guarantee to the accuracy or completeness of the data, document, or map product produced.** This data and/or document may be inaccurate due to errors contained in the original sources or occurring through the digital formatting, printing, electronic transmission process, or the failure to include or otherwise cross-reference any updates or changes to the original sources, or for any other reason. The County specifically disclaims and accepts no responsibility for any errors or inaccuracies in the original sources, the conversion of such source into a digital/printed format, the electronic transmission of such information, the failure to include or otherwise cross-reference any updates or changes to the original sources, and any other errors or omissions that may occur. This product and data included are for informational purposes only and may not have been prepared for or be suitable for legal, engineering or surveying purposes. They do not represent an on-the-ground survey and represent only the approximate relative location of features included in order to provide limited geographic reference. **Use of this information is the sole responsibility of the user. Walker County assumes no liability for any errors, omissions, or inaccuracies in the information provided regardless of how caused or, for any decision made or action taken by any person in reliance upon any information or data furnished herein.**